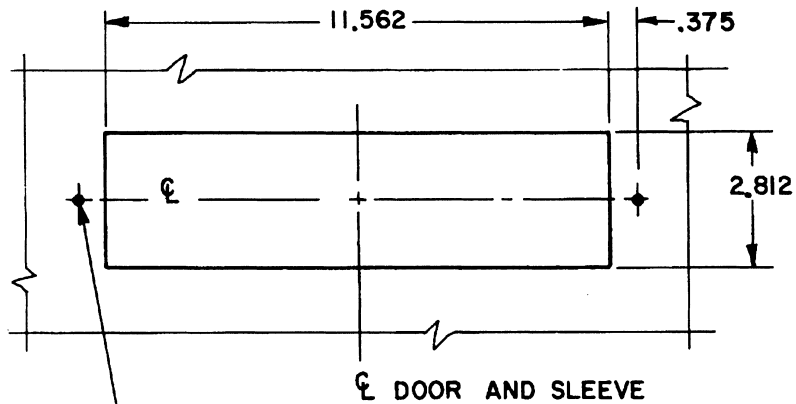
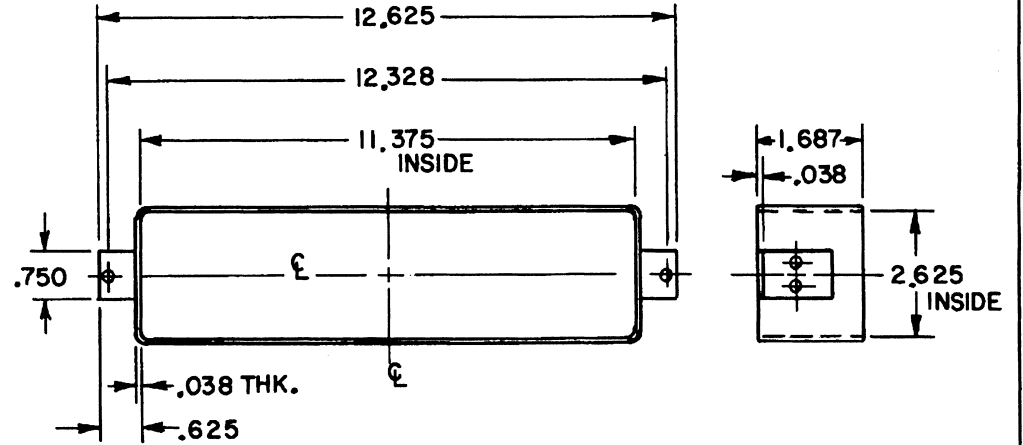


# DOOR DETAIL



NO. 6 SL. PN. S/M/S  
X .750 LG. (2-REQ'D)

# SLEEVE DETAIL



EFFECTIVE: 9-1-86 R.A.S.

<b>B. BALDWIN</b>	
<b>0052 LETTER BOX SLEEVE</b>	
TEMPLATE NO. VARIATIONS	TEMPLATE NO.
	<b>A019</b>

DO NOT SCALE DRAWING

©1986 by Baldwin Hardware Corporation